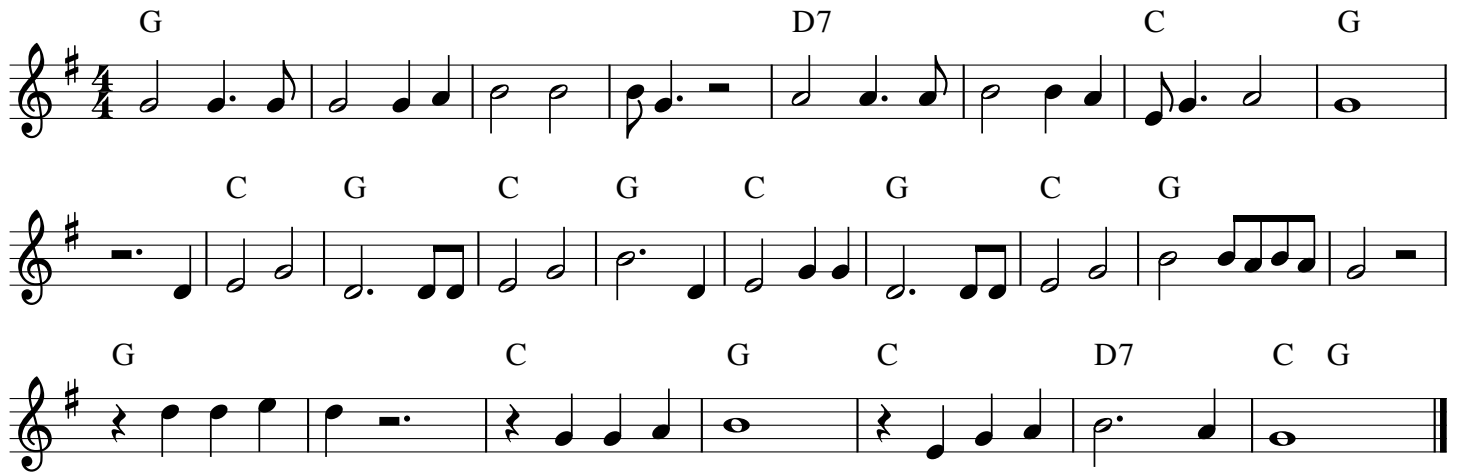


Long Black Veil



Ten years ago, on a cold dark night,
there was someone killed 'neath the town hall light.
There were few at the scene, but they all agreed
that the man who ran looked a lot like me.

She walks these hills in a long black veil.
She visits my grave while the night wind wails.
Nobody knows, Nobody sees, Nobody knows but me.

The judge said "Son, what is your alibi?
If you were somewhere else, then you won't have to die."
Well, I said not a word, though it meant my life
For I'd been in the arms of my best friends wife.

CHORUS

The scaffold was high, and eternity neared
She stood in the crowd and shed not a tear.
But sometimes at night, when the cold wind blows
In a long black veil, she cries over my bones.

CHORUS

Nobody knows, Nobody sees, Nobody knows but me.

CHORUS instrumental

Nobody knows, Nobody sees, Nobody knows but me.